

## Use Batteryview upgrade and acquire system information Pylontech Low Voltage Product

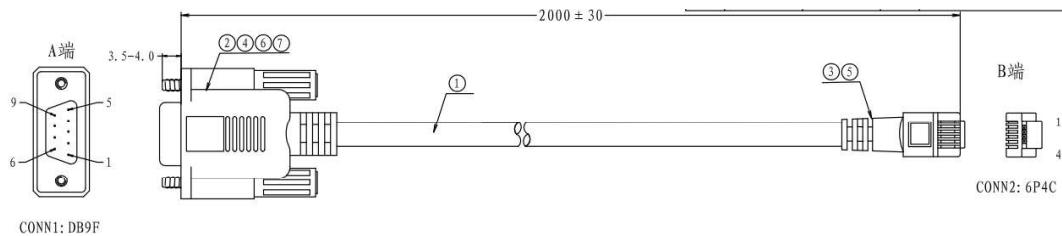
**This SOP is for Pylontech authorized software engineer and field application engineer to upgrade and acquire system information of Pylontech Powercube product. To avoid misoperation or commands lead to system failure, please contact Pylontech first before using any of the command not listed in this SOP; Otherwise the product will be out of Pylontech warranty scope.**

### Section A: Battery Firmware Upgrade

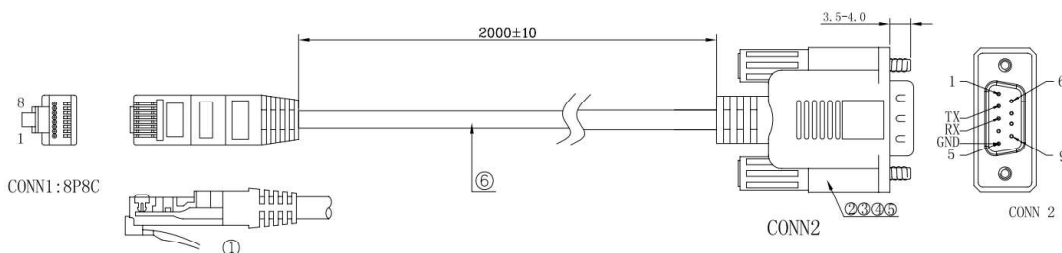
1. Connect from Battery RS232/Console port to laptop USB:  
R232 cable sample



For US2000/US3000/Phantom-S/UP2500, the RS232 cable type is RJ11 – DB9 – USB:



For Force L1/L2, the RS232 cable type is RJ45 – DB9 – USB:

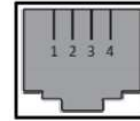


Please re-wire the PIN OUT on RJ11/RJ45 side as below:

For RJ11 cable:

### Definition of RJ11 Port Pin

No.	RS232 Pin
1	GND
2	TXD
3	RXD
4	GND



RJ11 Port

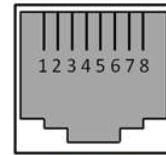


RJ11 Plug

For RJ45 cable:

### Definition of RJ45 Port Pin

CAN	RS485	RS232
---	---	---
---	---	---
---	---	TX
CANH	---	---
CANL	---	---
GND		RX
---	RS485A	---
---	RS485B	---

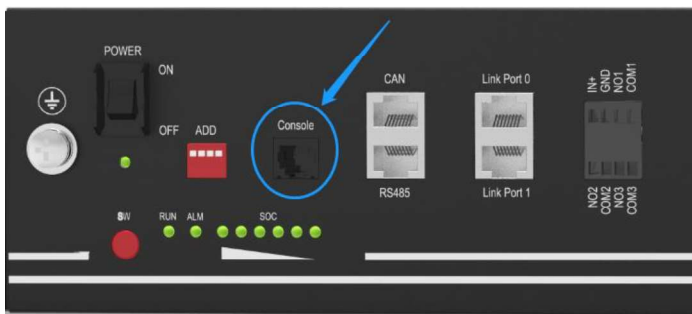


RJ45 Port

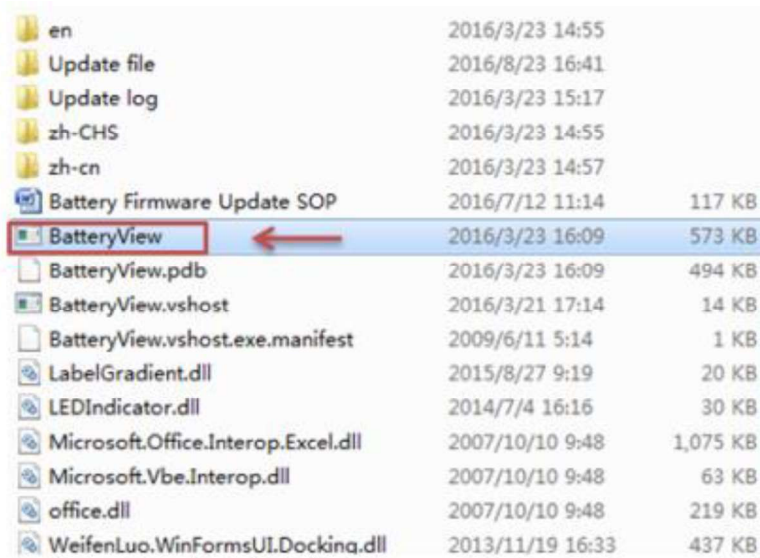


RJ45 Plug

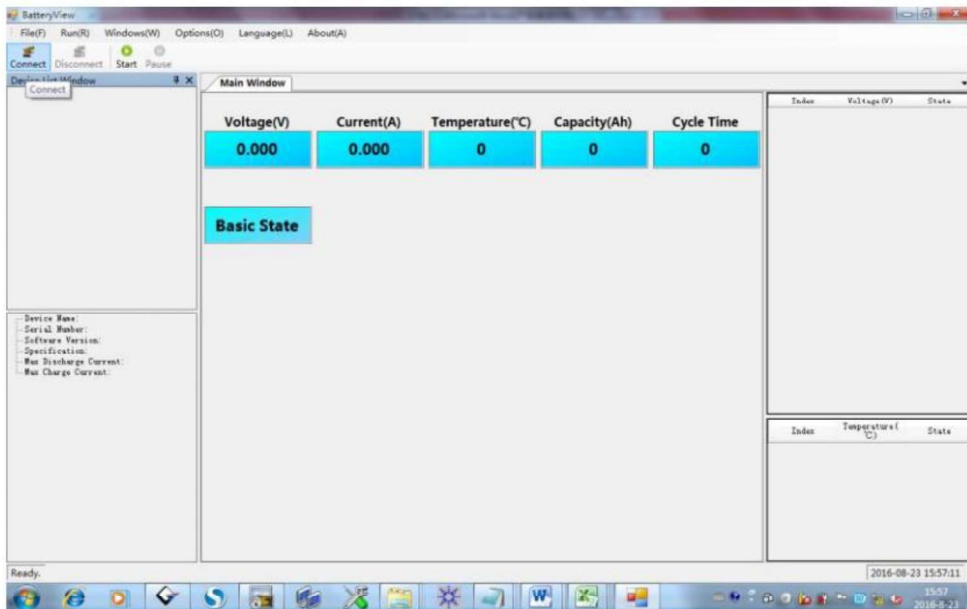
Connect to battery Console Port(as below BLUE circle):



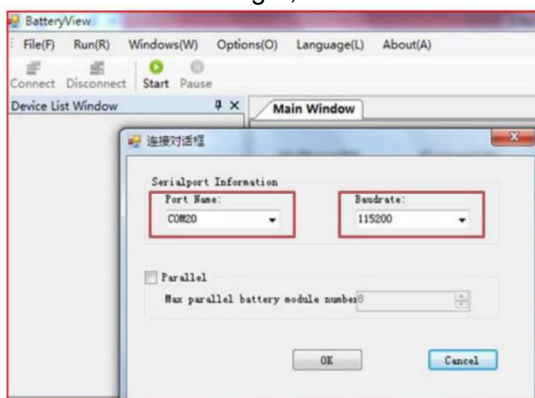
2. Open 'Batteryview.exe':



3. Connect to Battery:

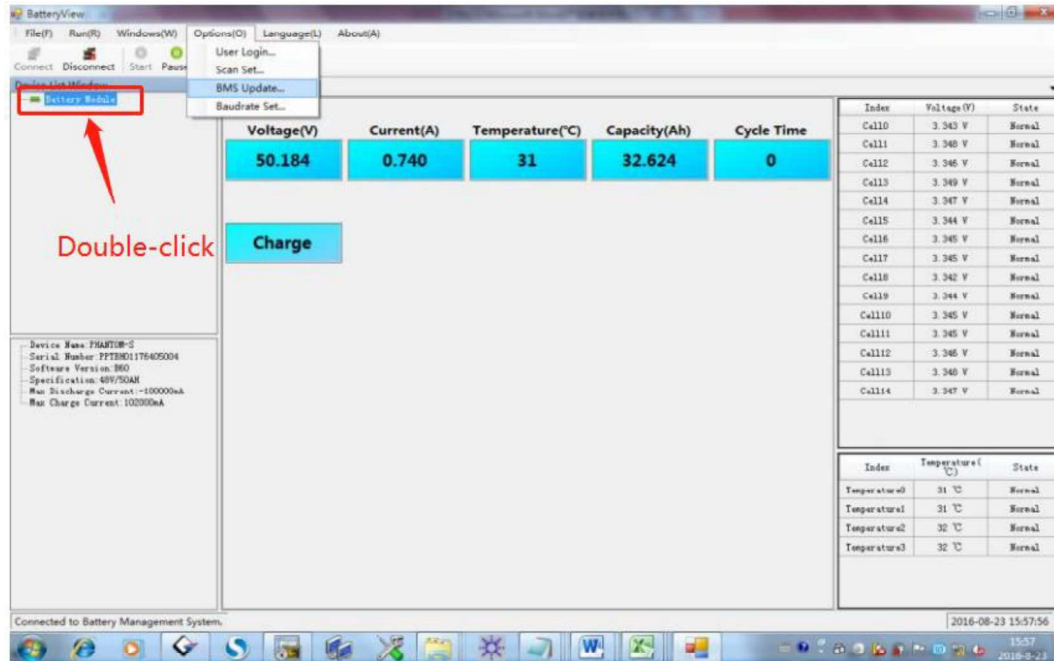


The Port Name will be automatically recognized once the RS232 cable is well installed or from the Device Manager; The Baudrate is 115200.

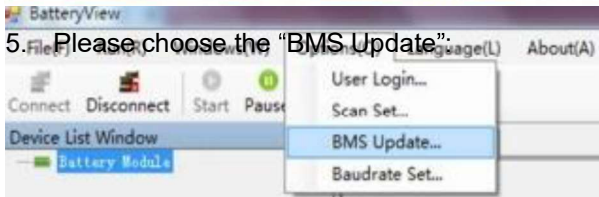


4. If the BatteryView showed values, which means connect successfully:

**\*Note: Please double-click the 'Battery Module' tool bar to receive correct battery information on the bottom right side, then take a Screenshot as evidence for further maintenance task.**



5. Please choose the "BMS Update":



6. Click Browse to choose the firmware:

